

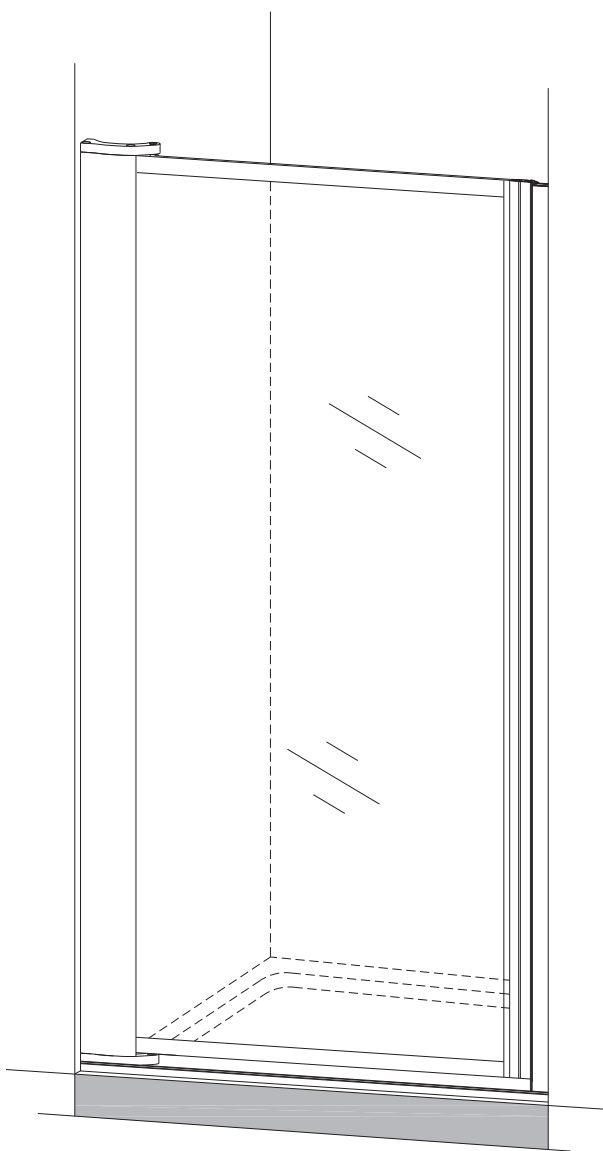
TIDES PIVOT

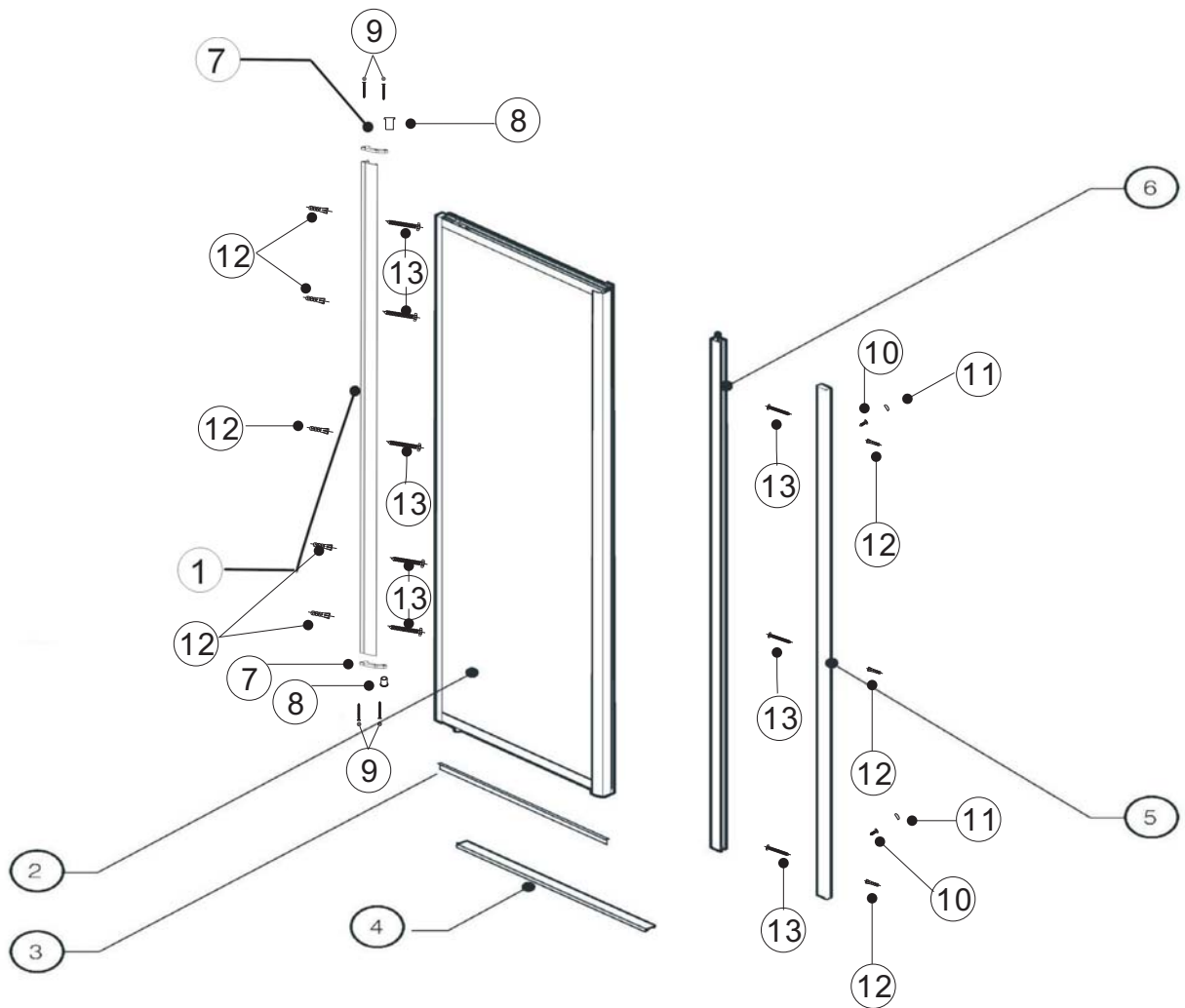
Installation Manual

IMPORTANT: Record the Model No.(see carton) of your tub or shower enclosure for future reference.

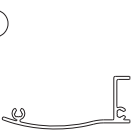



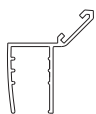
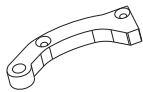






Model No. _____

READ THE INSTRUCTIONS CAREFULLY, familiarize yourself with all the parts as shown in the exploded view. The exploded view will also provide a helpful reference when relating to the location of the various parts and how they are mounted.

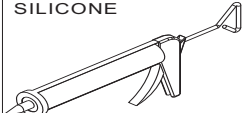
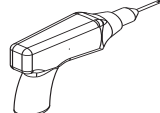
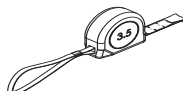


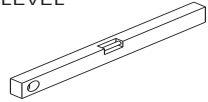
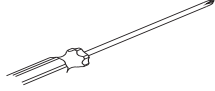

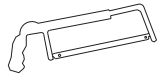


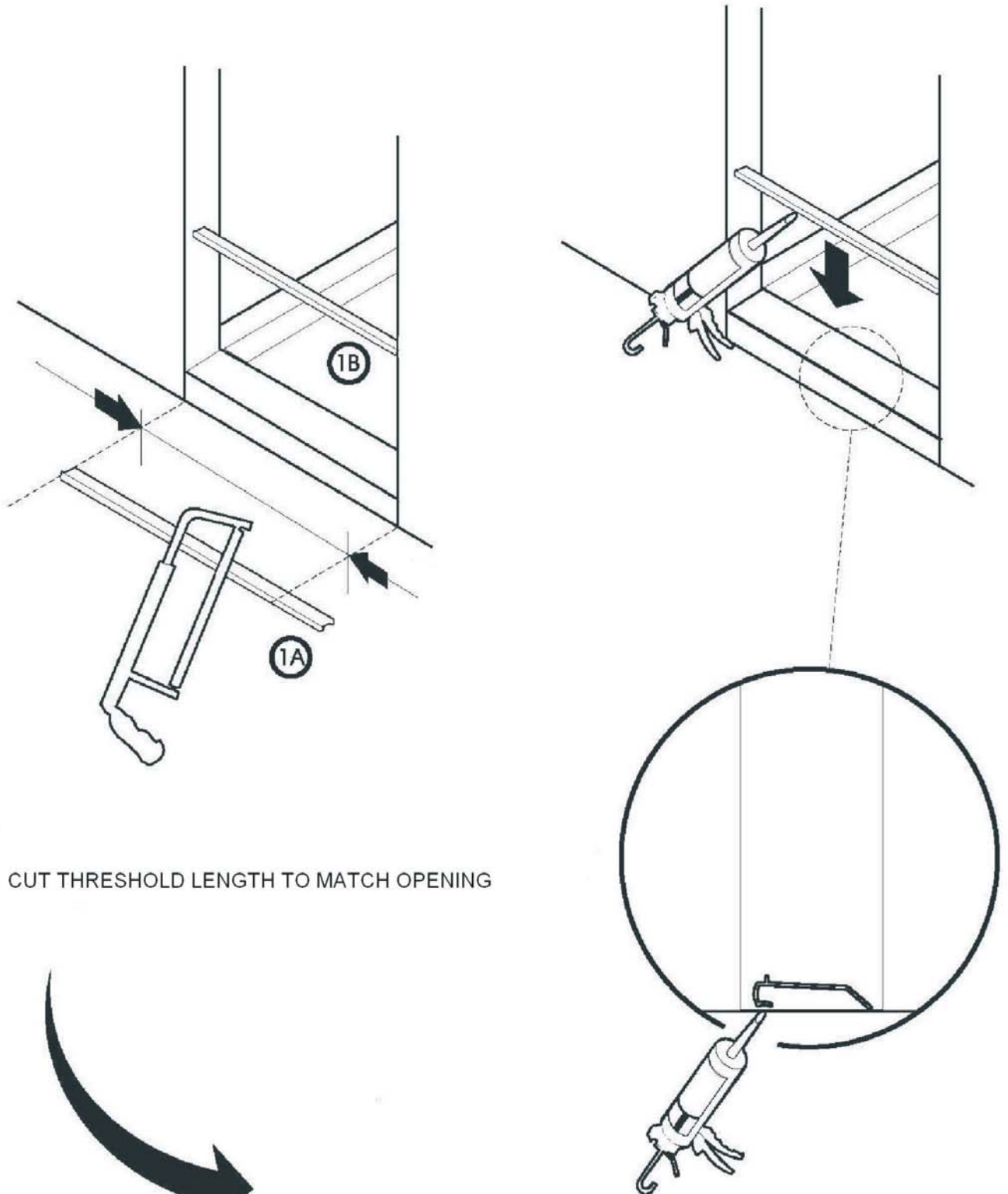


• PART LIST.

① 	③ 	④ 	⑤ 
Pivot Jamb (1 pcs)	PLASTICS (1 pcs)	BOTTOM TRACK (1 pcs)	WALL JAMB (1 pcs)
⑥ 	⑦ 	⑧ 	⑨  4x35mm
MAGNET JAMB (1 pcs)	PIVOT SUPPORT (2 pcs)	PIVOT SUPPORT PLASTICS (2 pcs)	PIVOT SUPPORT SCREW (4 pcs)
⑩  4x9mm	⑪ 	⑫ 	⑬  4x38mm
SCREW (2 pcs)	SCREW CAP (7 pcs)	WALL PLUG (8 pcs)	SCREW (8 pcs)

• TOOLS.

SILICONE 	DRILL 
MEASURE TAPE 	RUBBER MALLET 
DRILL BITS  1/8" 1/4"	LEVEL 
SCREW DRIVERS 	PENCIL 
HANDSAW 	



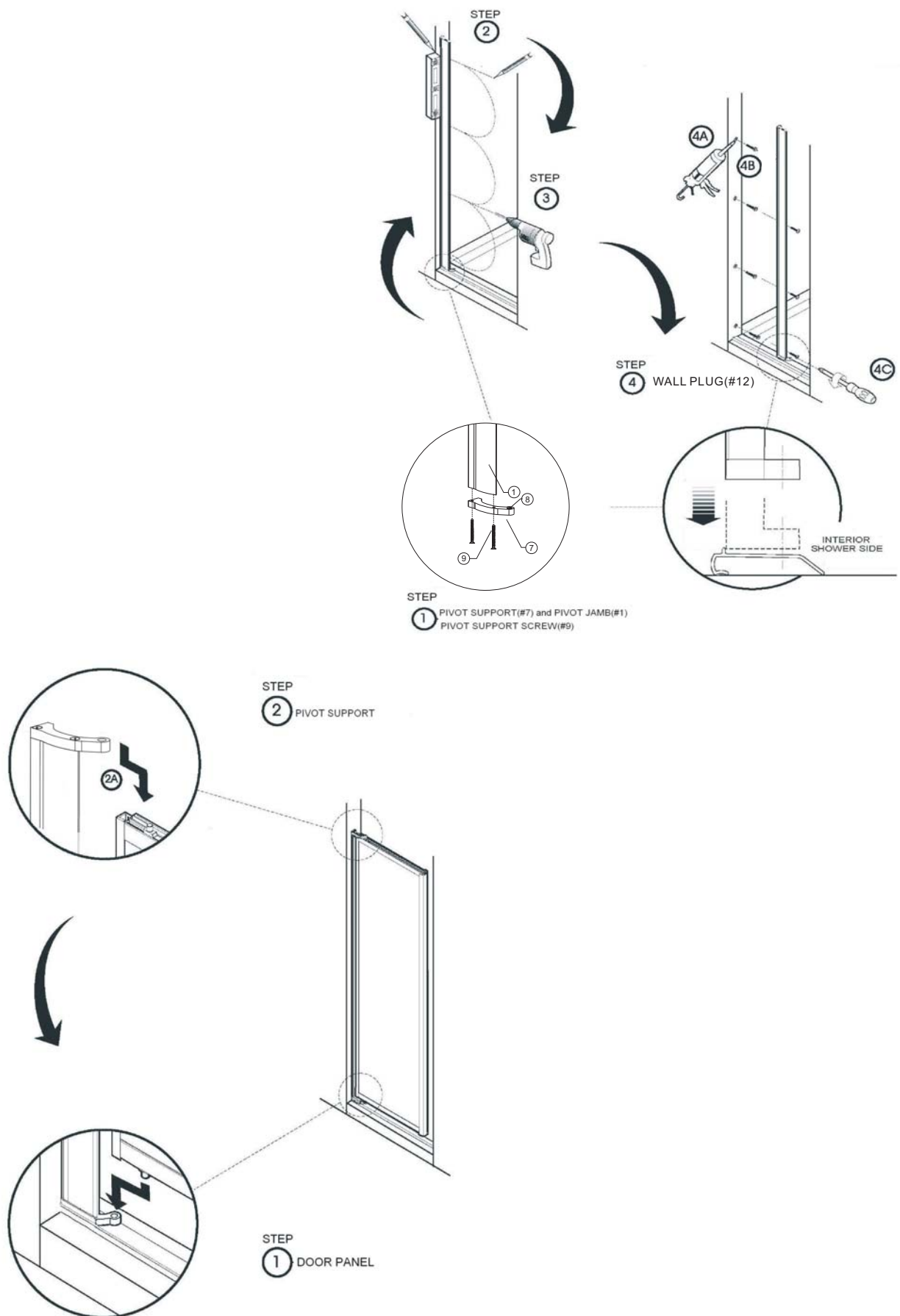
STEP

① CUT THRESHOLD LENGTH TO MATCH OPENING



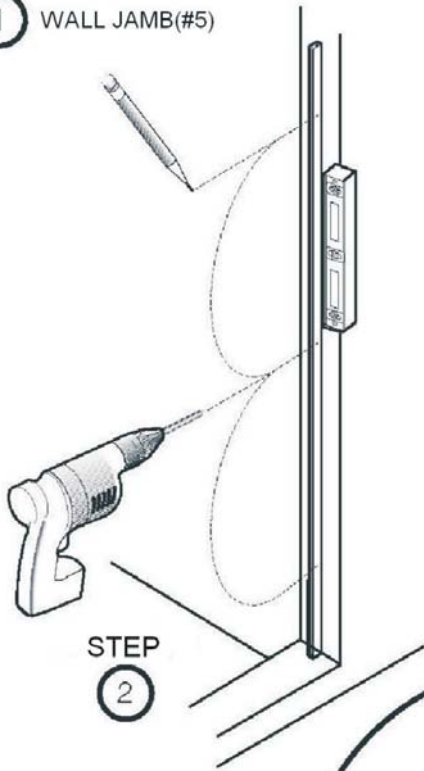
STEP

② THRESHOLD(1)+SILICONE UNDERNEATH



STEP

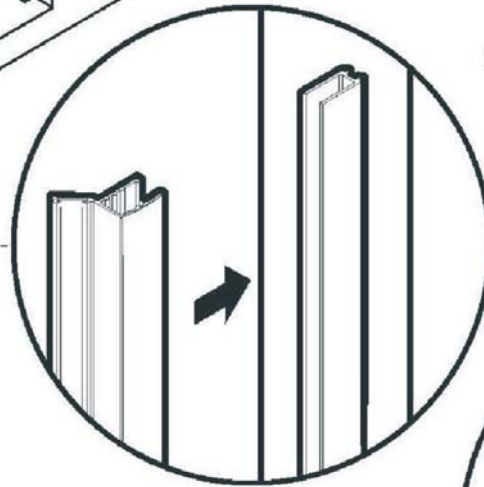
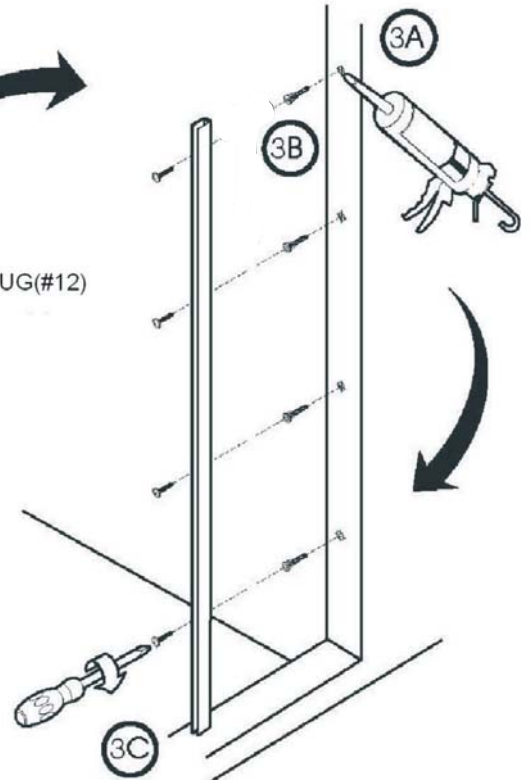
1 WALL JAMB(#5)



STEP
2

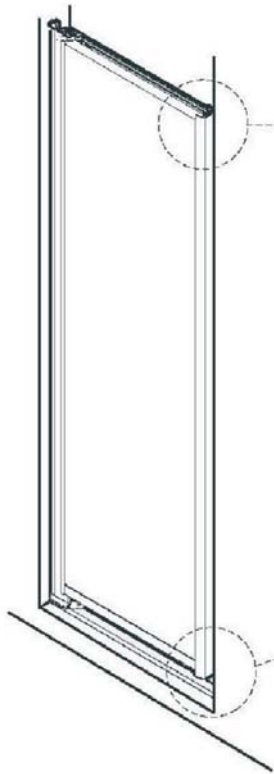
STEP

3 WALL PLUG(#12)



STEP

4 MAGNET JAMB(#6)
and
WALL JAMB(#5)



STEP

5 SCREW 3/8(#10) and SCREW CAP(#11)

CLOSE DOOR AND CHECK TO MARK SURE THE MAGNETIC STRIP LINES UP CORRECTLY. IF IT IS NECESSARY TO ADJUST THE DOOR PANEL. INSERT A PHILLIPS HEAD SCREW DRIVER INTO THE HOLE AT THE TOP AND BOTTOM OF THE DOOR PANEL ON THE PIVOT SIDE. BY TURNING THE SCREW CLOCKWISE, THE DOOR PANEL WILL GET CLOSER TO THE MAGNETIC STRIP AND COUNTER CLOCKWISE FOR THE OPPOSITE DIRECTION.

